

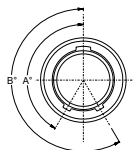
# MR3 & MP3 MICRO M&M CONNECTORS™ TRIPLE START THREAD MATING



TopFlite's M&M Connector™ line is proud to present the MR3 Receptacle & MP3 Plug Micro Connector series. This series utilizes triple start modified 60 degree style thread mating, allowing for even quicker mating and unmating, than its double start threaded series. This is truly a miniature D38999 style connector at its finest. It can be made in variety of styles and finishes. Like all of TopFlite's M&M Connector™ series, these are intermatable with competitor industry equivalent connectors. Plug connectors can be purchased with standard or hex style coupling nuts and with standard or anti-decoupling mating styles. Further, the customer may choose from a multitude of contact styles and rear-end termination designs, including TopFlite's Integrated Termination Tail (ITT) to negate the need for backshell hardware. Crimp-style contacts can be installed and removed with standard industry tooling. Ask your TopFlite sales representative about adding TopFlite's stainless steel termination bands (which use standard industry tooling for installation) and/or backshell hardware to couple with your connector purchase.

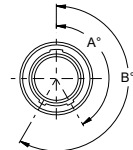
PART NUMBER BUILDER											
EXAMPLE PART NUMBER	TFC-	MR3	16	IT	F	06-07	P	A	-020500	-W	-ZXXX
STANDARD PREFIX											
CONNECTOR TYPE	MR3 - JAM NUT RECEPTACLE MP3 - PLUG										
STYLE	06 - STANDARD PLUG 08 - HEX NUT PLUG 16 - ANTI-DECOUPLING PLUG 18 - ANTI-DECOUPLING HEX PLUG 24 - JAM NUT RECEPTACLE 22 - INLINE RECEPTACLE 20 - BOX MOUNT RECEPTACLE										
BACKEND STYLE	TH - THREADED BACK IT - INTEGRATED TERMINATION TAIL CS - CASTLE BACK										
MATERIAL/ FINISH	F - ALUMINUM W/ ELECTROLESS NICKEL Z - ALUMINUM W/ BLACK ZINC NICKEL A - ALUMINUM W/ BLACK ANODIZE D - ALUMINUM W/ OLIVE DRAB CADMIUM T - ALUMINUM W/ NICKEL TEFLON/PDTE K - STAINLESS W/ PASSIVATION TREATMENT (SEE PAGE 4 FOR MATERIAL AND FINISH SPECIFICATIONS & ADDITIONAL FINISHES)										
SIZE & INSERT ARRANGEMENT	06-07 09-10 10-26 ETC. (SEE APPENDIX A FOR ALL OPTIONS. CONSULT FACTORY FOR CUSTOM ARRANGEMENTS)										
CONTACT STYLE	P - CRIMP PIN S - CRIMP SOCKET PCP - PC TAIL PIN PCS - PC TAIL SOCKET PS - SOLDER CUP PIN SS - SOLDER CUP SOCKET XP - NO PIN CONTACTS XS - NO SOCKET CONTACTS										
POLARIZATION	A B C ETC. (SEE TABLE II & III)										
PC TAIL CONTACT SIZE	FIRST 3 DIGITS ARE THE DIAMETER, EX. 020 = .020" DIAMETER TAIL SECOND 3 DIGITS ARE THE LENGTH FROM REAR OF CONNECTOR, EX. 400 = .400" THUS, FOR EXAMPLE, -018300 WOULD EQUATE TO .018" DIAMETER & .300" LENGTH (OMIT FOR NON-PC TAIL CONTACT VERSIONS)										
WIRE HOLES	W - WITH WIRE HOLES (OMIT FOR NONE)										
Z-CODE	Z112 Z090 Z030 ETC. (CONTACT SALES STAFF IF A Z-CODE IS REQUIRED FOR A CUSTOM CONFIGURATION/OPTION(S). OMIT FOR NONE)										

TABLE II: PLUG KEY POLARIZATIONS

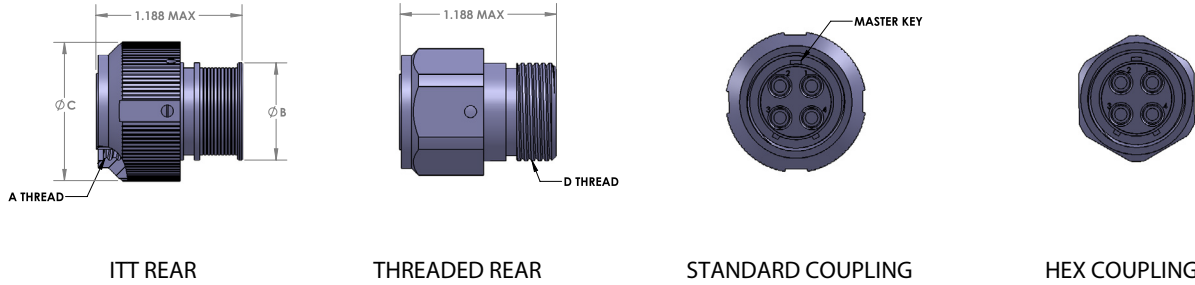


Position	A°	B°
A	150°	210°
B	75°	210°
C	95°	230°
D	140°	275°
E	75°	275°
F	95°	210°

TABLE III: RECEPTACLE KEYWAY POLARIZATIONS



Position	A°	B°
A	150°	210°
B	75°	210°
C	95°	230°
D	140°	275°
E	75°	275°
F	95°	210°



ITT REAR

THREADED REAR

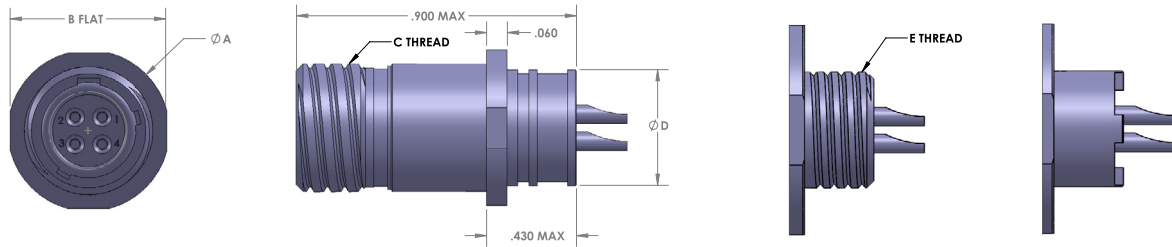
STANDARD COUPLING

HEX COUPLING

PLUG CONNECTOR DIMENSIONS (IN)

SHELL SIZE	A THREAD	Ø B	Ø C	D THREAD ACCESSORY
8	.5000-.1P-.3L-TS-2B	.317 (8.05)	.692 (17.58)	.3750-32 UNEF-2A
9	.5625-.1P-.3L-TS-2B	.397 (10.08)	.789 (20.04)	.4375-28 UNEF-2A
10	.6250-.1P-.3L-TS-2B	.473 (12.01)	.827 (21.01)	.5000-28 UNEF-2A
11	.6875-.1P-.3L-TS-2B	.519 (13.18)	.918 (23.32)	.5625-24 UNEF-2A
12	.7500-.1P-.3L-TS-2B	.585 (14.86)	.984 (24.99)	.6250-24 UNEF-2A
13	.8125-.1P-.3L-TS-2B	.646 (16.41)	1.047 (26.59)	.6875-24 UNEF-2A
15	.9375-.1P-.3L-TS-2B	.687 (17.45)	1.098 (27.89)	.7500-20 UNEF-2A
18	1.1250-.1P-.3L-TS-2B	.884 (22.45)	1.287 (32.69)	.9375-20 UNEF-2A
19	1.1875-.1P-.3L-TS-2B	.884 (22.45)	1.311 (33.30)	.9375-20 UNEF-2A
21	1.3125-.1P-.3L-TS-2B	1.003 (25.48)	1.448 (36.78)	1.0625-18 UNEF-2A
23	1.4375-.1P-.3L-TS-2B	1.135 (28.83)	1.562 (39.67)	1.1875-18 UNEF-2A

## INLINE CABLE RECEPTACLE - SHELL STYLE 22



FRONT VIEW

ITT REAR

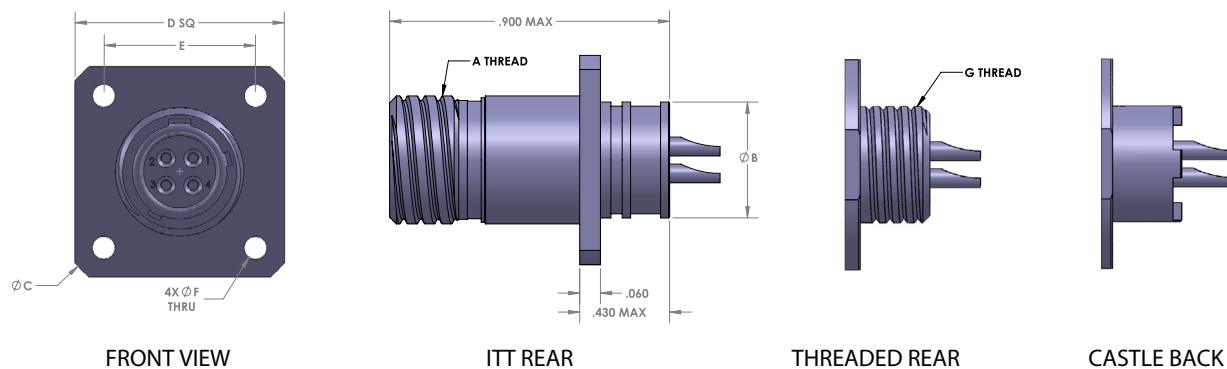
THREADED REAR

CASTLE BACK

DIMENSIONS (IN)

SHELL SIZE	Ø A	B FLAT	C THREAD	Ø D	E THREAD UNEF-2A
8	.540 (13.72)	.510 (12.95)	.5000-.1P-.3L-TS-2A	.316 (8.03)	.3750-32 UNEF-2A
9	.605 (15.37)	.575 (14.60)	.5625-.1P-.3L-TS-2A	.397 (10.08)	.4375-28 UNEF-2A
10	.668 (16.97)	.638 (16.21)	.6250-.1P-.3L-TS-2A	.472 (11.99)	.5000-28 UNEF-2A
11	.730 (18.54)	.700 (17.78)	.6875-.1P-.3L-TS-2A	.519 (13.18)	.5625-24 UNEF-2A
12	.793 (20.14)	.763 (19.38)	.7500-.1P-.3L-TS-2A	.585 (14.86)	.6250-24 UNEF-2A
13	.855 (21.72)	.825 (20.96)	.8125-.1P-.3L-TS-2A	.646 (16.41)	.6875-24 UNEF-2A
15	.980 (24.89)	.950 (24.13)	.9375-.1P-.3L-TS-2A	.687 (17.45)	.7500-20 UNEF-2A
18	1.165 (29.59)	1.135 (28.83)	1.1250-.1P-.3L-TS-2A	.884 (22.45)	.9375-20 UNEF-2A
19	1.235 (31.37)	1.205 (30.61)	1.1875-.1P-.3L-TS-2A	.884 (22.45)	.9375-20 UNEF-2A
21	1.360 (34.54)	1.330 (33.78)	1.3125-.1P-.3L-TS-2A	1.003 (25.48)	1.0625-18 UNEF-2A
23	1.485 (37.72)	1.455 (36.96)	1.4375-.1P-.3L-TS-2A	1.134 (28.80)	1.1875-18 UNEF-2A

## BOX MOUNT RECEPTACLE - SHELL STYLE 20

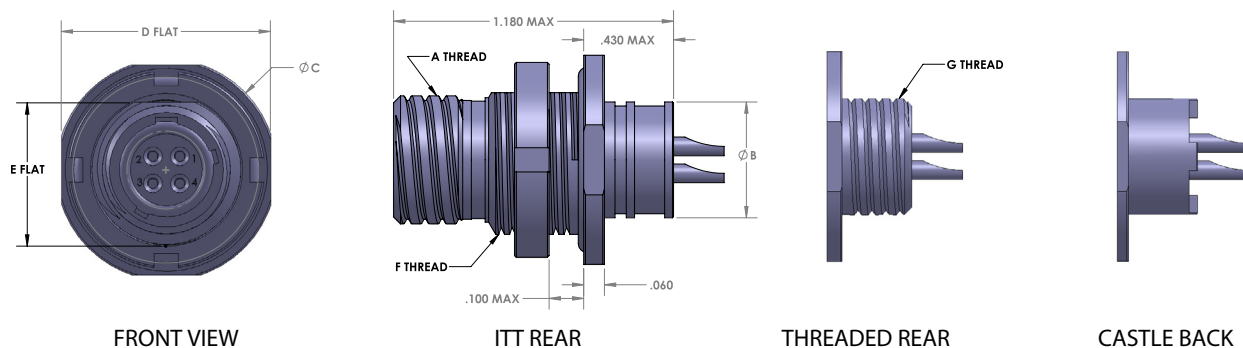


DIMENSIONS (IN)

SHELL SIZE	A THREAD	Ø B	Ø C	D SQ TYP	E BSC	Ø F ± .003 (.08)	G THREAD
8	.5000-.1P-.3L-TS-2A	.316 (8.03)	1.150 (29.21)	.850 (21.59)	.660 (16.76)	.096 (2.44) .091 (2.31)	.3750-32 UNEF-2A
9	.5625-.1P-.3L-TS-2A	.397 (10.08)	1.230 (31.24)	.913 (23.19)	.723 (18.36)		.4375-28 UNEF-2A
10	.6250-.1P-.3L-TS-2A	.472 (11.99)	1.330 (33.78)	.975 (24.76)	.785 (19.94)		.5000-28 UNEF-2A
11	.6875-.1P-.3L-TS-2A	.519 (13.18)	1.410 (35.81)	1.039 (26.39)	.848 (21.54)		.5625-24 UNEF-2A
12	.7500-.1P-.3L-TS-2A	.585 (14.86)	1.500 (38.10)	1.099 (27.91)	.909 (23.09)		.6250-24 UNEF-2A
13	.8125-.1P-.3L-TS-2A	.646 (16.41)	1.590 (40.39)	1.163 (29.54)	.973 (24.71)		.6875-24 UNEF-2A
15	.9375-.1P-.3L-TS-2A	.687 (17.45)	1.750 (44.45)	1.288 (32.72)	1.058 (26.87)	.130 (3.30) .126 (3.20)	.7500-20 UNEF-2A
18	1.1250-.1P-.3L-TS-2A	.884 (22.45)	2.000 (50.80)	1.475 (37.47)	1.255 (31.88)		.9375-20 UNEF-2A
19	1.1875-.1P-.3L-TS-2A	.884 (22.45)	2.094 (53.19)	1.537 (39.04)	1.327 (33.71)		.9375-20 UNEF-2A
21	1.3125-.1P-.3L-TS-2A	1.003 (25.48)	2.270 (57.66)	1.663 (42.24)	1.452 (36.88)		1.0625-18 UNEF-2A
23	1.4375-.1P-.3L-TS-2A	1.134 (28.80)	2.440 (61.98)	1.787 (45.39)	1.570 (39.88)		1.1875-18 UNEF-2A

\*Max Panel Thickness .093"

## JAM NUT RECEPTACLE - SHELL STYLE 24



DIMENSIONS (IN)

SHELL SIZE	A THREAD .1P-.3L-TS-2A	Ø B	Ø C	D FLAT	E FLAT	F THREADS	G ACCESSORY THREAD
8	.5000	.316 (8.03)	.760 (19.30)	.730 (18.54)	.535 (13.59)	.5625-28 UNEF-2A	.3750-32 UNEF-2A
9	.5625	.397 (10.08)	.880 (22.35)	.850 (21.59)	.661 (16.79)	.6875-28 UN-2A	.4375-28 UNEF-2A
10	.6250	.472 (11.99)	.880 (22.35)	.850 (21.59)	.661 (16.79)	.6875-28 UN-2A	.5000-28 UNEF-2A
11	.6875	.519 (13.18)	.955 (24.26)	.925 (23.50)	.721 (18.31)	.7500-28 UN-2A	.5625-24 UNEF-2A
12	.7500	.585 (14.86)	1.060 (26.92)	1.035 (26.29)	.784 (19.91)	.8125-28 UN-2A	.6250-24 UNEF-2A
13	.8125	.646 (16.41)	1.120 (28.45)	1.090 (27.69)	.843 (21.41)	.8750-28 UN-2A	.6875-24 UNEF-2A
15	.9375	.687 (17.45)	1.203 (30.56)	1.173 (29.79)	.970 (24.64)	1.0000-28 UN-2A	.7500-20 UNEF-2A
18	1.1250	.884 (22.45)	1.389 (35.28)	1.359 (34.52)	1.147 (29.13)	1.1875-28 UN-2A	.9375-20 UNEF-2A
19	1.1875	.884 (22.45)	1.450 (36.83)	1.420 (36.07)	1.221 (31.01)	1.2500-28 UN-2A	.9375-20 UNEF-2A
21	1.3125	1.003 (25.48)	1.590 (40.39)	1.560 (39.62)	1.350 (34.29)	1.3750-28 UN-2A	1.0625-18 UNEF-2A
23	1.4375	1.134 (28.80)	1.705 (43.31)	1.675 (42.55)	1.470 (37.34)	1.5000-28 UN-2A	1.1875-18 UNEF-2A