

5015 SERIES COMMERCIAL CONNECTOR SERIES



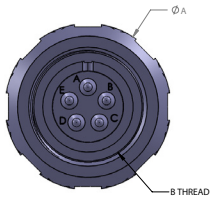
TopFlite specializes in the design and manufacture of MIL-C-5015 Commercial Equivalent Connectors that are offered in a variety of materials, finishes, and contact styles including Printed Circuit Board, Solder, and Crimp termination. The TopFlite Advantage is that the customer can fully customize the connector design, including but not limited to overall length, custom insert arrangements, flange size or style, specialty materials, integrated backshells, and more. If an option(s) is not listed in the part number builder below, TopFlite can issue a specialty “Z-Code” to the end of the part number nomenclature to cover any custom alterations the customer may require for their application. Remember, TopFlite specializes in custom connector design and consulting, so if you can’t find it, chances are we can make it!

PART NUMBER BREAKDOWN											
EXAMPLE PART NUMBER	TFC-	42	H	06	TH	F	10S-02	P	-020500	-W	-ZXXX
STANDARD PREFIX											
CONNECTOR TYPE	42 - PLUG 43 - RECEPTACLE										
HERMETICALLY SEALED	H - INCLUDES GLASS/CERAMIC HERMETIC SEALING (OMIT FOR NONE)										
STYLE	06 - STANDARD PLUG 22 - INLINE RECEPTACLE 20 - BOX MOUNT RECEPTACLE (MS3400 STYLE)										
BACKEND STYLE	TH - THREADED BACK IT - INTEGRATED TERMINATION TAIL CS - CASTLE BACK FB - FLAT BACK (PC TAIL OR SOLDER CONTACTS ONLY)										
MATERIAL/FINISH	F - ALUMINUM W/ ELECTROLESS NICKEL Z - ALUMINUM W/ BLACK ZINC NICKEL A - ALUMINUM W/ BLACK ANODIZE D - ALUMINUM W/ OLIVE DRAB CADMIUM T - ALUMINUM W/ NICKEL TEFLON/PTFE K - STAINLESS W/ PASSIVATION TREATMENT (SEE PAGE 4 FOR MATERIAL AND FINISH SPECIFICATIONS & ADDITIONAL FINISHES)										
SIZE & INSERT ARRANGEMENT	10SL-04 10S-02 12S-03 ETC. (SEE APPENDIX A FOR ALL OPTIONS. CONSULT FACTORY FOR CUSTOM ARRANGEMENTS)										
CONTACT STYLE	P - CRIMP PIN S - CRIMP SOCKET PCP - PC TAIL PIN PCS - PC TAIL SOCKET PS - SOLDER CUP PIN SS - SOLDER CUP SOCKET XP - NO PIN CONTACTS XS - NO SOCKET CONTACTS										
PC TAIL CONTACT SIZE	FIRST 3 DIGITS ARE THE DIAMETER, EX. 020 = .020" DIAMETER TAIL SECOND 3 DIGITS ARE THE LENGTH FROM REAR OF CONNECTOR, EX. 400 = .400" THUS, FOR EXAMPLE, -018300 WOULD EQUATE TO .018" DIAMETER & .300" LENGTH (OMIT FOR NON-PC TAIL CONTACT VERSIONS)										
WIRE HOLES	W - WITH WIRE HOLES (OMIT FOR NONE)										
Z-CODE	Z112 Z090 Z030 ETC. (CONTACT SALES STAFF IF A Z-CODE IS REQUIRED FOR A CUSTOM CONFIRGURATION/OPTION(S). OMIT FOR NONE)										

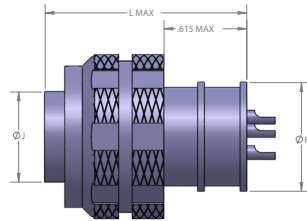
Notes

1. For Full product dimensions, refer to MIL-C-5015 Procurement Specification.
2. Consult Factory for any required options not seen listed above
3. Connectors with Solder Cup or PC Tail Contact Options are Backpotted
4. Hermetic Sealing only available with Non-Crimp, Pin Contact Connectors
5. See Appendix B for General Performance Data

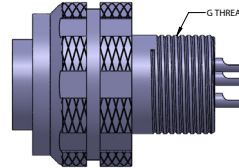
PLUG SERIES 42 - SHELL STYLE 06



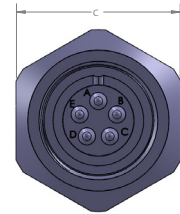
STANDARD COUPLING



ITT REAR



THREADED REAR

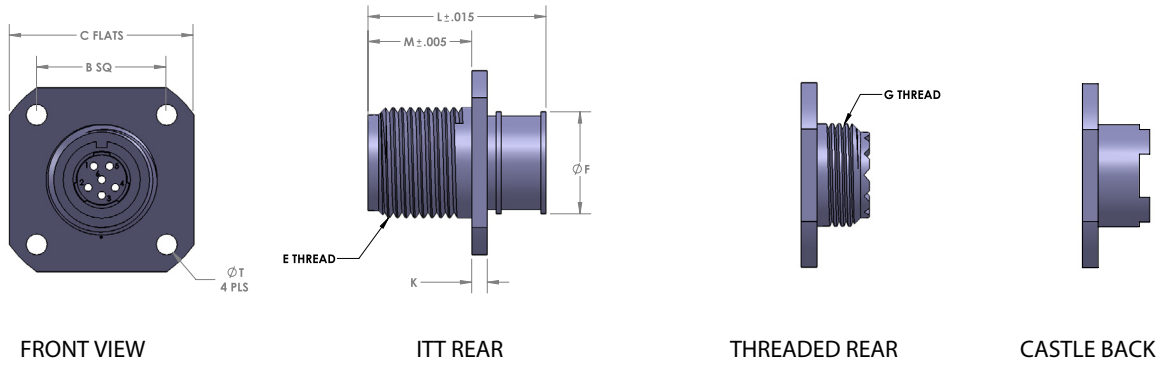


HEX COUPLING

DIMENSIONS (IN)

SHELL SIZE	A MAX	B THREAD	C	F	G THREAD	L
8S	0.844	.5000-28	0.794	0.562	.5000-20	1.460
10S	0.969	.6250-24	0.919	0.687	.6250-24	1.530
10SL	0.969	.6250-24	0.919	0.687	.6250-24	1.530
12S	1.062	.7500-20	1.012	0.812	.7500-20	1.688
12	1.062	.7500-20	1.012	0.812	.7500-20	2.062
14S	1.156	.8750-20	1.106	0.937	.8750-20	1.688
14	1.156	.8750-20	1.106	0.937	.8750-20	2.062
16S	1.250	1.000-20	1.200	1.062	1.000-20	1.688
16	1.250	1.000-20	1.200	1.062	1.000-20	2.062
18	1.344	1.125-18	1.294	1.125	1.0625-18	2.062
20	1.469	1.250-18	1.419	1.250	1.1875-18	2.188
22	1.594	1.375-18	1.544	1.437	1.3125-18	2.188
24	1.719	1.500-18	1.669	1.562	1.4375-18	2.312
28	1.969	1.750-18	1.919	1.687	1.750-18	2.312
32	2.219	2.000-18	2.169	1.750	2.000-18	2.438
36	2.469	2.250-16	2.419	1.875	2.250-16	2.438
40	2.719	2.500-16	2.669	2.000	2.500-16	2.438

BOX MOUNT RECEPTACLE SERIES 43 - SHELL STYLE 20



FRONT VIEW

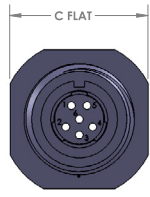
ITT REAR

THREADED REAR

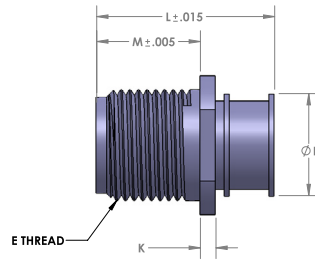
CASTLE BACK

DIMENSIONS (IN)								
SHELL SIZE	B	C	E THREAD	F	G THREAD	L	M	T
8S	0.594	0.875	.5000-28	0.562	.5000-20	1.460	0.562	0.120
10S	0.719	1.000	.6250-24	0.687	.6250-24	1.530	0.562	0.120
10SL	0.719	1.000	.6250-24	0.687	.6250-24	1.530	0.562	0.120
12S	0.812	1.094	.7500-20	0.812	.7500-20	1.688	0.562	0.120
12	0.812	1.094	.7500-20	0.812	.7500-20	2.062	0.750	0.120
14S	0.906	1.188	.8750-20	0.937	.8750-20	1.688	0.562	0.120
14	0.906	1.188	.8750-20	0.937	.8750-20	2.062	0.750	0.120
16S	0.969	1.281	1.000-20	1.062	1.000-20	1.688	0.562	0.120
16	0.969	1.281	1.000-20	1.062	1.000-20	2.062	0.750	0.120
18	1.062	1.375	1.125-18	1.125	1.0625-18	2.062	0.750	0.120
20	1.156	1.500	1.250-18	1.250	1.1875-18	2.188	0.750	0.120
22	1.250	1.625	1.375-18	1.437	1.3125-18	2.188	0.750	0.120
24	1.375	1.750	1.500-18	1.562	1.4375-18	2.312	0.812	0.147
28	1.562	2.000	1.750-18	1.687	1.750-18	2.312	0.812	0.147
32	1.750	2.250	2.000-18	1.750	2.000-18	2.438	0.875	0.173
36	1.938	2.500	2.250-16	1.875	2.250-16	2.438	0.875	0.173
40	2.188	2.750	2.500-16	2.000	2.500-16	2.438	0.875	0.173

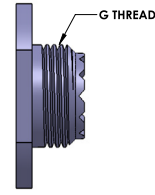
INLINE CABLE RECEPTACLE SERIES 43 - SHELL STYLE 22



FRONT VIEW



ITT REAR



THREADED REAR



CASTLE BACK

DIMENSIONS (IN)

SHELL SIZE	C	E THREAD	F	G THREAD	L	M
8S	0.550	.5000-28	0.562	.5000-20	1.460	0.562
10S	0.675	.6250-24	0.687	.6250-24	1.530	0.562
10SL	0.675	.6250-24	0.687	.6250-24	1.530	0.562
12S	0.800	.7500-20	0.812	.7500-20	1.688	0.562
12	0.800	.7500-20	0.812	.7500-20	2.062	0.750
14S	0.925	.8750-20	0.937	.8750-20	1.688	0.562
14	0.925	.8750-20	0.937	.8750-20	2.062	0.750
16S	1.050	1.000-20	1.062	1.000-20	1.688	0.562
16	1.050	1.000-20	1.062	1.000-20	2.062	0.750
18	1.175	1.125-18	1.125	1.0625-18	2.062	0.750
20	1.300	1.250-18	1.250	1.1875-18	2.188	0.750
22	1.425	1.375-18	1.437	1.3125-18	2.188	0.750
24	1.550	1.500-18	1.562	1.4375-18	2.312	0.812
28	1.800	1.750-18	1.687	1.750-18	2.312	0.812
32	2.050	2.000-18	1.750	2.000-18	2.438	0.875
36	2.300	2.250-16	1.875	2.250-16	2.438	0.875
40	2.550	2.500-16	2.000	2.500-16	2.438	0.875