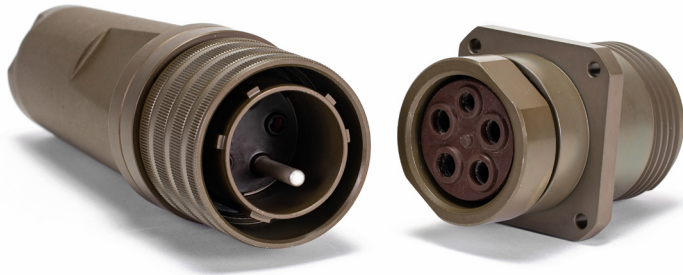


22992 (CLASS L) COMMERCIAL POWER CONNECTOR SERIES



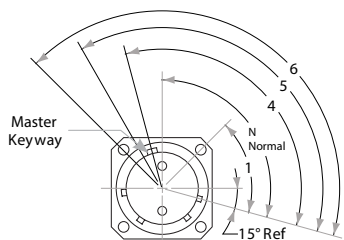
TopFlite specializes in the design and manufacture of MIL-DTL-22992 (Class L) Commercial Equivalent Power Connectors that are offered in a variety of materials, finishes, and contact styles including Solder and Crimp termination. The TopFlite Advantage is that the customer can fully customize the connector design, including but not limited to overall length, custom insert arrangements, flange size or style, specialty materials, integrated backshells, and more. If an option(s) is not listed in the part number builder below, TopFlite can issue a specialty “Z-Code” to the end of the part number nomenclature to cover any custom alterations the customer may require for their application. Remember, TopFlite specializes in custom connector design and consulting, so if you can’t find it, chances are we can make it!

PART NUMBER BREAKDOWN											
EXAMPLE PART NUMBER	TFC-	29	H	22	TH	F	32-04	P	N	-W	-ZXXX
STANDARD PREFIX											
CONNECTOR TYPE	29- PLUG/RECEPTACLE										
HERMETICALLY SEALED	H- INCLUDES GLASS/CERAMIC HERMETIC SEALING (OMIT FOR NONE)										
STYLE	06- STANDARD PLUG 09- WALL MOUNT PLUG 22- INLINE RECEPTACLE 20- BOX MOUNT RECEPTACLE										
BACKEND STYLE	TH- THREADED BACK IT- INTEGRATED TERMINATION TAIL CS- CASTLE BACK FB- FLAT BACK (PC TAIL OR SOLDER CONTACTS ONLY)										
MATERIAL/ FINISH	F- ALUMINUM W/ ELECTROLESS NICKEL Z - ALUMINUM W/ BLACK ZINC NICKEL A- ALUMINUM W/ BLACK ANODIZE D- ALUMINUM W/ OLIVE DRAB CADMIUM T- ALUMINUM W/ NICKEL TEFLON/PTFE K- STAINLESS W/ PASSIVATION TREATMENT (SEE PAGE 4 FOR MATERIAL AND FINISH SPECIFICATIONS & ADDITIONAL FINISHES)										
SIZE & INSERT ARRANGEMENT	28-12, 28-13 (40 AMP RATING) 32-04, 32-05, 32-12, 32-13 (60 AMP RATING) 44-02, 44-03, 44-12, 44-13, 44-50, 44-51, 44-52, 44-56 (100 AMP RATING) 52-12, 52-13 (200 AMP RATING)										
CONTACT STYLE	P- CRIMP PIN S- CRIMP SOCKET PS- SOLDER CUP PIN SS- SOLDER CUP SOCKET XP- NO PIN CONTACTS XS- NO SOCKET CONTACTS										
MASTER KEYWAY POSITION	N 1 4 5 6										
ALTERNATE INSERT ROTATION	N W X Y Z										
Z-CODE	Z112 Z090 Z030 ETC. (CONTACT SALES STAFF IF A Z-CODE IS REQUIRED FOR A CUSTOM CONFIGURATION/OPTION(S). OMIT FOR NONE)										

Notes

1. For Full product dimensions, refer to MIL-DTL-22992 Procurement Specification.
2. Consult Factory for any required options not seen listed above
3. Connectors with Solder Cup Contact Options are Backpotted
4. Hermetic Sealing only available with Non-Crimp, Pin Contact Connectors
5. See Appendix B for General Performance Data

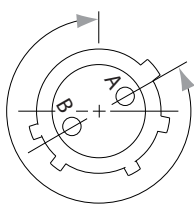
KEYWAY AND INSERT POSITIONS



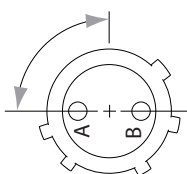
FRONT FACE OF RECEPTACLE

MASTER KEY/KEYWAY POSITION	
N	DC, 2 Wire, 28 VDC
1	AC, 3 PHASE, 3 WIRE, 450/480 VAC
4	AC, 1 Phase, 2 Wire, 120 VAC
4	AC, 1 Phase, 3 Wire, 120/240 VAC
4	AC, 3 Phase, 4 Wire, 120/208 VAC
5	AC, 1 Phase, 2 Wire, 240 VAC
5	AC, 3 Phase, 4 Wire, 240/416 VAC
6	AC, 3 PHASE, 4 WIRE, 277/480 VAC

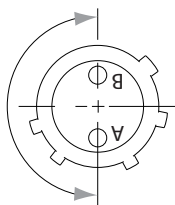
MASTER KEY/KEYWAY POSITION									
SHELL SIZE	CURRENT RATING (AMPS)	ALTERNATING CURRENT (AC) 60HZ & 400HZ							DIRECT CURRENT (DC)
		1 PHASE			3 PHASE				2 WIRE
		2 WIRE		3 WIRE	3 WIRE		4 WIRE		
		120 VAC	240 VAC	120/240 VAC	450/480 VAC	120/208 VAC	240/416 VAC	277/480 VAC	28 VDC
28	40	4	5	4	-	4	5	6	N
32	60	4	5	4	-	4	5	6	N
44	100	4	-	4	1	4	5	6	N
52	200	-	-	4	-	4	5	6	N



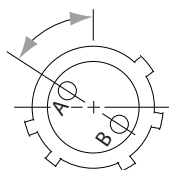
W ROTATION



X ROTATION



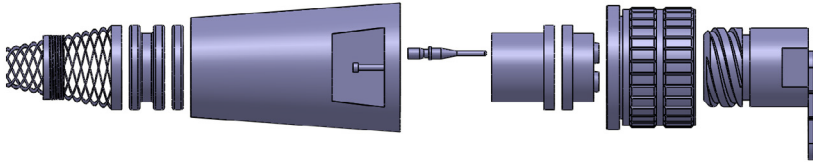
Y ROTATION



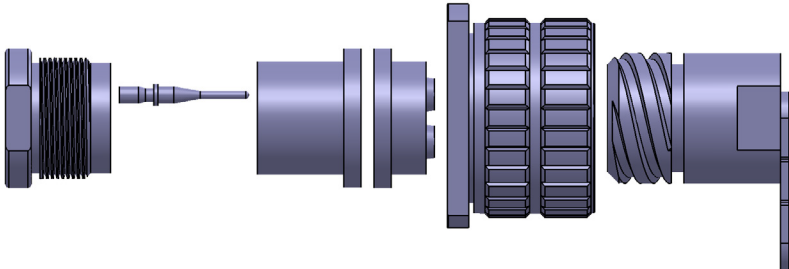
Z ROTATION

ALTERNATE INSERT ROTATIONS					
INSERT ARRANGEMENT	60 HZ AC OR DC	400 HZ AC			
	NORMAL	W	X	Y	Z
28-12	0°	-	-	180°	-
28-13	0°	-	-	180°	-
32-04	0°	-	90°	-	-
32-05	0°	-	90°	-	-
32-12	0°	-	-	180°	-
32-13	0°	-	-	180°	-
44-02	0°	-	-	-	-
44-03	0°	-	-	-	-
44-12	0°	-	-	-	60°
44-13	0°	-	-	-	60°
44-50	0°	-	-	-	-
44-51	0°	-	-	-	-
44-52	0°	-	-	-	-
44-56	0°	-	-	-	-
52-12	0°	300°	-	-	-
52-13	0°	300°	-	-	-

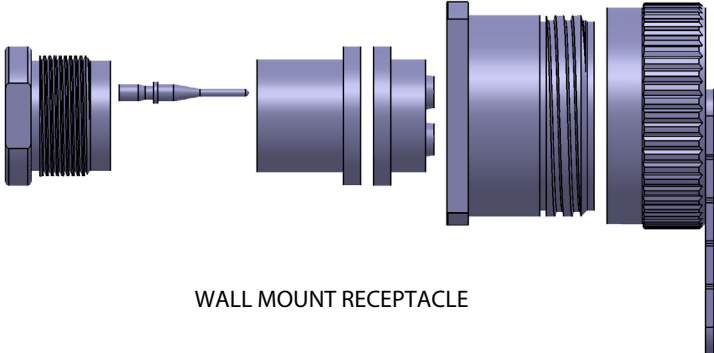
GENERAL PARTS BREAKDOWN



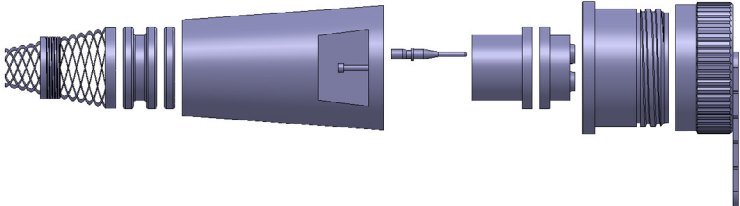
STANDARD PLUG



WALL MOUNT PLUG

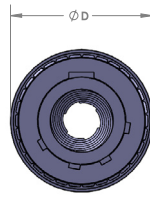


WALL MOUNT RECEPTACLE

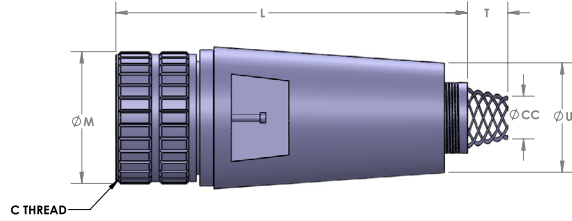


INLINE RECEPTACLE

STANDARD PLUG SERIES 29 - STYLE 06



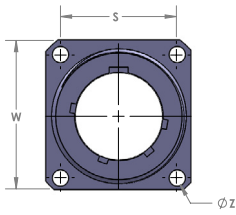
FRONT VIEW



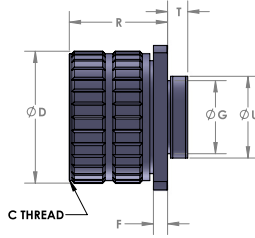
PROFILE VIEW

DIMENSIONS (IN)								
SHELL SIZE	D	C THREAD CLASS 2B	L	T	M	U	CC CABLE CLEARANCE	
							MIN	MAX
28-12	2.439 (62.0)	2.000-.1428P-.2857L	8.188 (208.0)	7.188 (182.6)	2.312 (58.7)	2.000 (50.8)	.922 (23.4)	1.047 (26.6)
28-13	2.439 (62.0)	2.000-.1428P-.2857L	8.188 (208.0)	7.188 (182.6)	2.312 (58.7)	2.000 (50.8)	1.005 (25.5)	1.130 (28.7)
32-04	2.689 (68.3)	2.250-.1428P-.2857L	8.188 (208.0)	7.188 (182.6)	2.562 (65.1)	2.000 (50.8)	.844 (21.4)	.969 (24.6)
32-05, 32-12	2.689 (68.3)	2.250-.1428P-.2857L	8.188 (208.0)	7.188 (182.6)	2.562 (65.1)	2.000 (50.8)	1.005 (25.5)	1.130 (28.7)
32-13	2.689 (68.3)	2.250-.1428P-.2857L	8.188 (208.0)	8.688 (220.7)	2.562 (65.1)	2.000 (50.8)	1.217 (30.9)	1.342 (34.1)
44-02	3.667 (93.1)	3.000-.1428P-.2857L	10.172 (258.4)	10.688 (271.5)	3.531 (89.7)	2.500 (63.5)	1.187 (30.1)	1.312 (33.3)
44-03	3.667 (93.1)	3.000-.1428P-.2857L	10.172 (258.4)	9.688 (246.1)	3.531 (89.7)	2.500 (63.5)	1.313 (33.4)	1.438 (36.5)
44-12	3.667 (93.1)	3.000-.1428P-.2857L	10.172 (258.4)	10.688 (271.5)	3.531 (89.7)	2.500 (63.5)	1.391 (35.3)	1.516 (38.5)
44-13	3.667 (93.1)	3.000-.1428P-.2857L	10.172 (258.4)	12.688 (322.3)	3.531 (89.7)	2.500 (63.5)	1.547 (39.2)	1.672 (42.5)
44-51	3.667 (93.1)	3.000-.1428P-.2857L	10.172 (258.4)	11.688 (296.9)	3.531 (89.7)	2.500 (63.5)	1.609 (40.9)	1.734 (44.0)
44-52	3.667 (93.1)	3.000-.1428P-.2857L	10.172 (258.4)	11.188 (284.2)	3.531 (89.7)	2.500 (63.5)	1.435 (36.4)	1.525 (38.7)
44-56	3.667 (93.1)	3.000-.1428P-.2857L	10.172 (258.4)	7.188 (182.6)	3.531 (89.7)	2.500 (63.5)	1.065 (27.1)	1.135 (28.8)
52-12	4.167 (105.8)	3.500-.1428P-.2857L	11.109 (282.2)	17.188 (436.6)	4.016 (102.0)	3.250 (82.6)	2.183 (55.4)	2.328 (59.1)
52-13	4.167 (105.8)	3.500-.1428P-.2857L	11.109 (282.2)	18.188 (462.0)	4.016 (102.0)	3.250 (82.6)	2.308 (58.6)	2.453 (62.3)

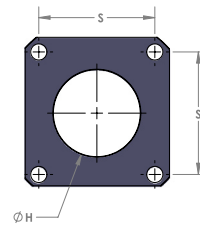
WALL MOUNT PLUG SERIES 29 - STYLE 09



FRONT VIEW



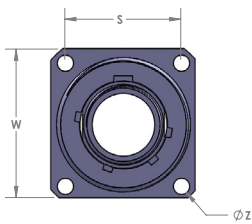
PROFILE VIEW



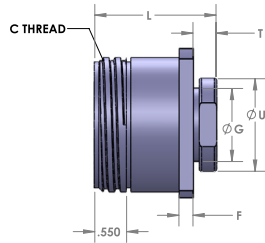
CUTOUT DIMENSIONS

DIMENSIONS (IN)											
SHELL SIZE	W	Z	C THREAD CLASS 2B	R	F	D	T	U	G	S	H
28	2.375 (60.3)	.177 (4.5)	2.000-.1428P-.2857L	2.639 (67.0)	.312 (7.9)	2.312 (58.7)	.959 (24.4)	2.000 (50.8)	1.938 (49.2)	1.844 (46.8)	1.976 (50.2)
32	2.625 (66.7)	.209 (5.3)	2.250-.1428P-.2857L	2.639 (67.0)	.312 (7.9)	2.562 (65.1)	.959 (24.4)	2.250 (57.2)	2.188 (55.6)	2.062 (52.4)	2.228 (56.6)
44	3.375 (85.7)	.281 (7.1)	3.000-.1428P-.2857L	2.998 (76.1)	.312 (7.9)	3.531 (89.7)	1.021 (25.9)	3.125 (79.4)	3.062 (77.8)	2.812 (71.4)	3.102 (78.8)
52	3.875 (98.4)	.281 (7.1)	3.500-.1428P-.2857L	2.998 (76.1)	.312 (7.9)	4.016 (102.0)	1.021 (25.9)	3.625 (92.1)	3.562 (90.5)	3.156 (80.2)	3.602 (91.5)

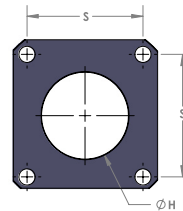
BOX MOUNT RECEPTACLE SERIES 29 - STYLE 20



FRONT VIEW



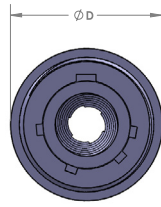
PROFILE VIEW



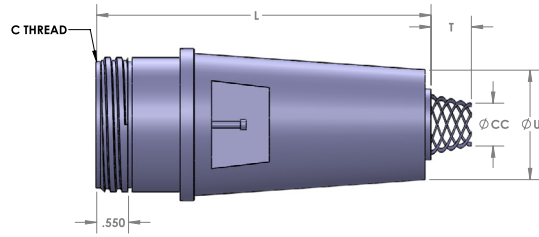
CUTOUT DIMENSIONS

DIMENSIONS (IN)											
SHELL SIZE	W	Z	C THREAD CLASS 2B	F	D	T	U	G	S	H	
28	2.375 (60.3)	.177 (4.5)	2.000-.1428P-.2857L	.312 (7.9)	1.376 (35.0)	2.000 (50.8)	1.938 (49.2)	1.844 (46.8)	1.976 (50.2)	1.976 (50.2)	
32	2.625 (66.7)	.209 (5.3)	2.250-.1428P-.2857L	.312 (7.9)	1.376 (35.0)	2.250 (57.2)	2.188 (55.6)	2.062 (52.4)	2.228 (56.6)	2.228 (56.6)	
44	3.375 (85.7)	.281 (7.1)	3.000-.1428P-.2857L	.312 (7.9)	1.438 (36.5)	3.125 (79.4)	3.062 (77.8)	2.812 (71.4)	3.102 (78.8)	3.102 (78.8)	
52	3.875 (98.4)	.281 (7.1)	3.500-.1428P-.2857L	.312 (7.9)	1.438 (36.5)	3.625 (92.1)	3.562 (90.5)	3.156 (80.2)	3.602 (91.5)	3.602 (91.5)	

INLINE RECEPTACLE SERIES 29 - STYLE 22



FRONT VIEW



PROFILE VIEW

DIMENSIONS (IN)							
SHELL SIZE	D	C THREAD CLASS 2B	L	T	U	CC CABLE CLEARANCE	
						MIN	MAX
28-12	2.439 (62.0)	2.000-.1428P-.2857L	8.156 (207.2)	7.188 (182.6)	2.000 (50.8)	.922 (23.4)	1.047 (26.6)
28-13	2.439 (62.0)	2.000-.1428P-.2857L	8.156 (207.2)	7.188 (182.6)	2.000 (50.8)	1.005 (25.5)	1.130 (28.7)
32-04	2.689 (68.3)	2.250-.1428P-.2857L	8.156 (207.2)	7.188 (182.6)	2.000 (50.8)	.844 (21.4)	.969 (24.6)
32-05, 32-12	2.689 (68.3)	2.250-.1428P-.2857L	8.156 (207.2)	7.188 (182.6)	2.000 (50.8)	1.005 (25.5)	1.130 (28.7)
32-13	2.689 (68.3)	2.250-.1428P-.2857L	8.156 (207.2)	8.688 (220.7)	2.000 (50.8)	1.217 (30.9)	1.342 (34.1)
44-02	3.667 (93.1)	3.000-.1428P-.2857L	10.125 (257.2)	10.688 (271.5)	2.500 (63.5)	1.187 (30.1)	1.312 (33.3)
44-03	3.667 (93.1)	3.000-.1428P-.2857L	10.125 (257.2)	9.688 (246.1)	2.500 (63.5)	1.313 (33.4)	1.438 (36.5)
44-12	3.667 (93.1)	3.000-.1428P-.2857L	10.125 (257.2)	10.688 (271.5)	2.500 (63.5)	1.391 (35.3)	1.516 (38.5)
44-13	3.667 (93.1)	3.000-.1428P-.2857L	10.125 (257.2)	12.688 (322.3)	2.500 (63.5)	1.547 (39.2)	1.672 (42.5)
44-51	3.667 (93.1)	3.000-.1428P-.2857L	10.125 (257.2)	11.688 (296.9)	2.500 (63.5)	1.609 (40.9)	1.734 (44.0)
52-12	4.167 (105.8)	3.500-.1428P-.2857L	11.109 (282.2)	17.188 (436.6)	3.250 (82.6)	2.183 (55.4)	2.328 (59.1)
52-13	4.167 (105.8)	3.500-.1428P-.2857L	11.109 (282.2)	18.188 (462.0)	3.250 (82.6)	2.308 (58.6)	2.453 (62.3)